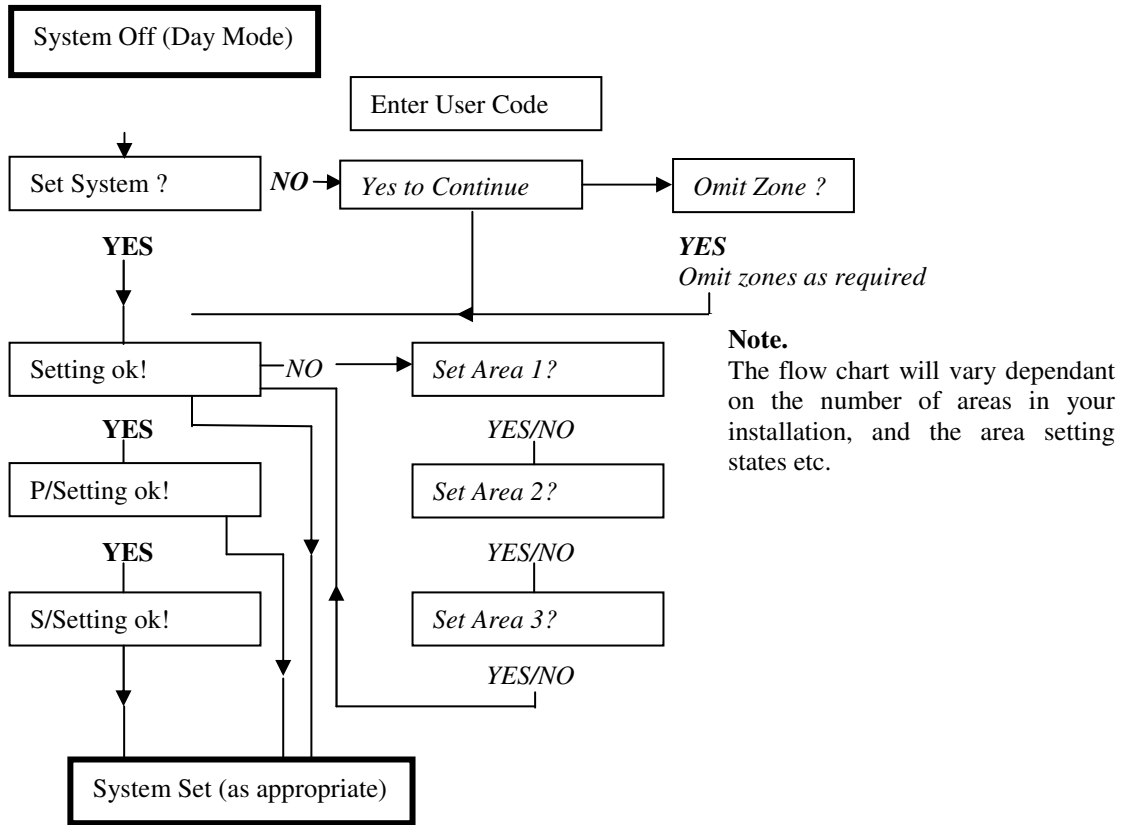


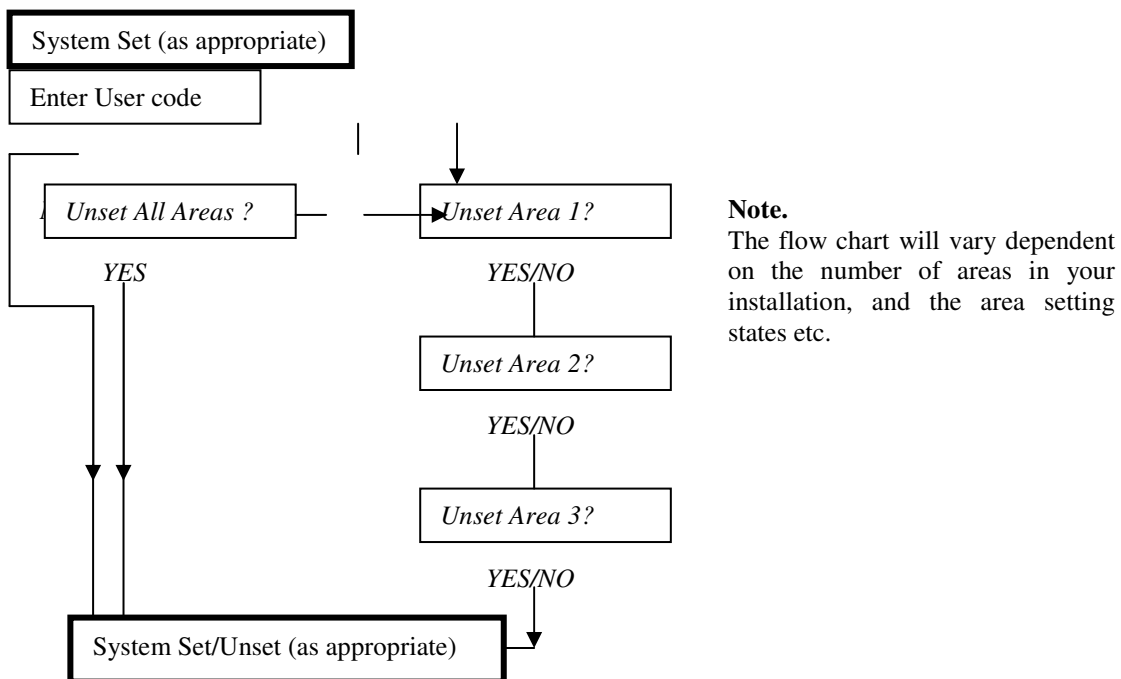
Setting Options Flow Chart

Italic is used to indicate, only available on area installation and functions may not be available to your code.



Unsetting Options Flowchart

Enter protected installation and proceed via entry route to the keypad. Entry warning tones may be sounding.



Reset Flow Chart

Record the cause of Alarm. Return to Day Mode and/or Silence Alarm (If a PA reset the PA switch).

